

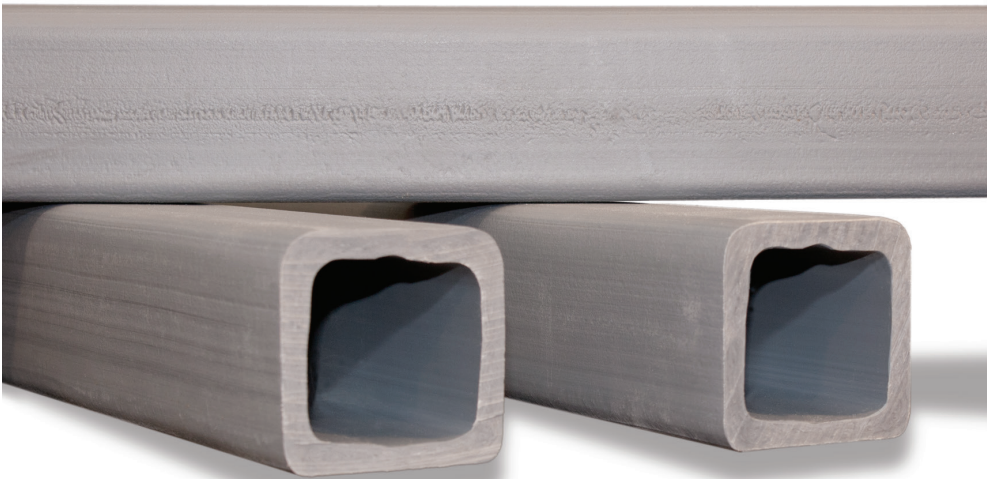
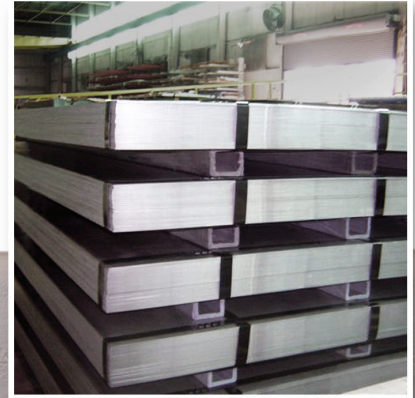


**TRU-RAIL**  
INHOUSE & TRANSIT  
**HOLLOW**

Returnable Support Packaging

# High-Performance Runners for Metals Industry Packaging

# HOLLOW



**TRU-RAIL Returnable Support Packaging (RSP)** is designed for the industry to meet specific objectives: protect bundled product from rust damage; ship and store product more economically; streamline procurement and the packaging process; eliminate excess paper packaging and waste disposal costs; and gain more supply chain efficiencies.

A Tall Order - but current users of **TRU-RAIL RSP** report that when they moved beyond a wooden skid to adopt this innovative technology, the advantages were clear - they saved time, they saved money, packaging waste was reduced, and at the end of the day, they can now deliver a more reliable quality of product to their customers.

**TRU-RAIL RSP - Strength & Versatility from a Simplified Solution!**

### TRU-RAIL 'Hollow Tube' SPECIFICATIONS:

- **V-1 3.375" x 3.375"**  
.375" Wall Thickness  
Load Bearing Capacity:  
8,500 lbs./foot  
Product Weight: 2.7 lbs/foot  
1000 ft MOQ
- **V-2 5.375" x 5.375"**  
.5" Wall Thickness  
Load Bearing Capacity:  
4,800 lbs./foot  
Product Weight: 4.5 lbs/foot  
600 ft MOQ
- **Available in Lengths Up to 20 feet**

### FEATURES:

- Super-Strong 100% Recycled HDPE Plastic Resins
- Non-Absorbant Material; Moisture & Oil Resistant
- Stays "True"; Engineered for Dimensional Stability
- Ultra-Durable; Extended Life & Reduced Costs
- 'In-House' & Closed-Loop 'Transit' Applications

### BENEFITS:

- Superior Product Protection; Prevents Rust
- Splinter-Free; Enhanced Safety for Personnel
- Sustainable & Cost-Effective; Eliminates Paper
- Customized Packaging; Cut-to-Length Versatility
- Space-Efficient Storage, Staging, & Return Footprints

**Also Offering:** High-Performance Plastic for Metal Coil Packaging: ■ Coil Cradles ■ Coil Pads ■ Coil Skids

**Tree Brand Packaging is the exclusive distributor for and brand owner of TRU-RAIL RSP —  
Call Us with Your Application Requirements!**

TRU-RAIL RSP / Tree Brand Packaging ■ 7971 Graham Road, Denver, NC 28037 ■ 704-483-0719 ■ [www.treebrand.com](http://www.treebrand.com)